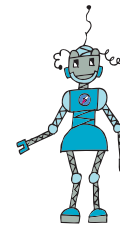
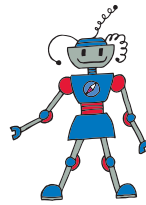
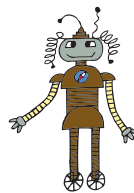
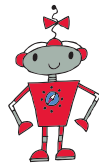


Suitable for:



Make a cloud spotter

Activity

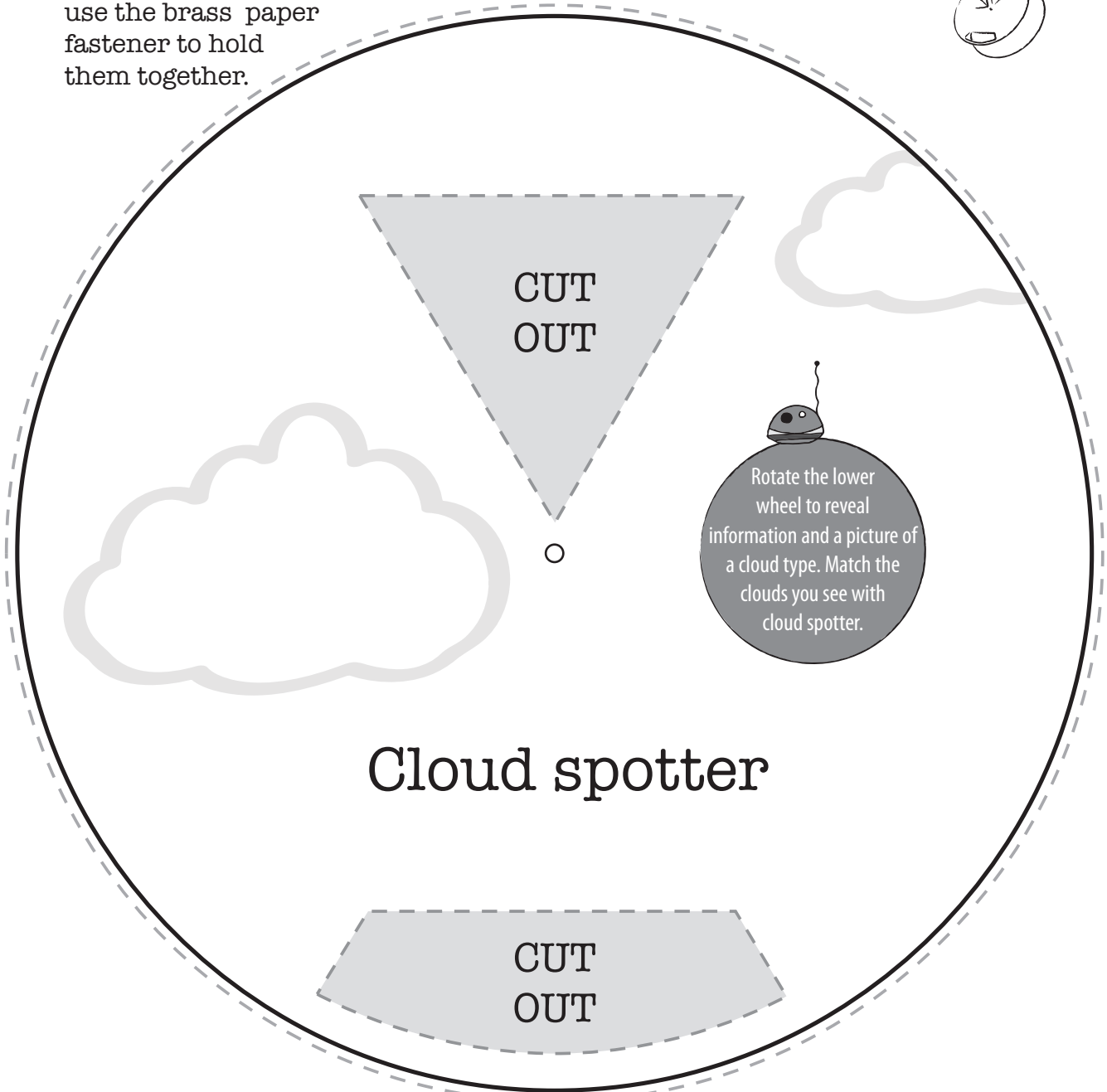
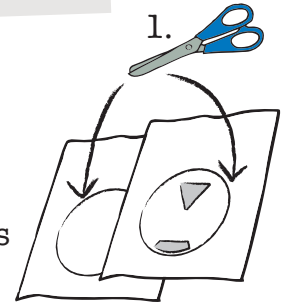
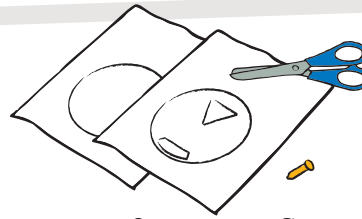
Make a cloud spotter and use it.

Things you need

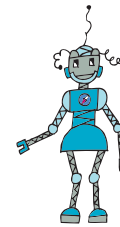
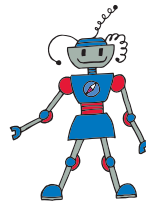
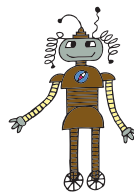
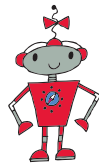
Copies of the 2 cloud spotter sheets • A brass paper fastener • Scissors

What to do

1. Cut out the 2 cloud spotter circles and the 2 windows in the top circle.
2. Make a small hole in the middle of the 2 circles and use the brass paper fastener to hold them together.



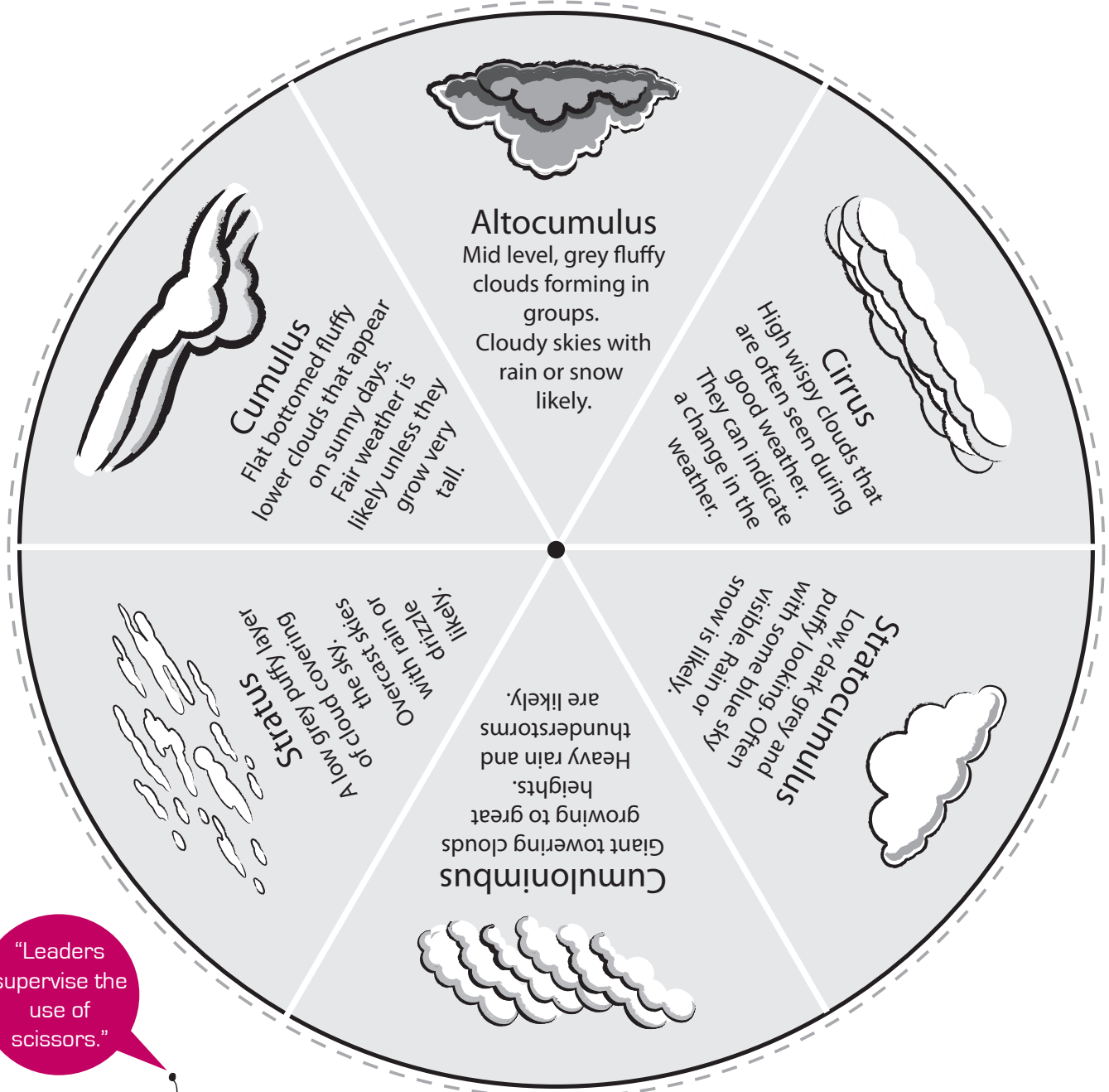
Suitable for:



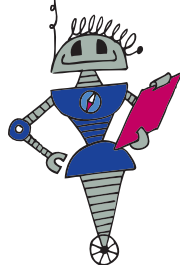
Make a cloud spotter

Activity

Continued.



"Leaders supervise the use of scissors."

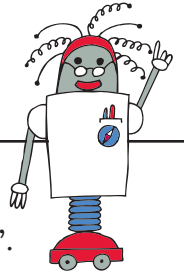


ProfBOT's Cloud guide

Cloud Group	Cloud Height	Cloud Types
High Clouds - Cirrus	Above 5,500 metres	• Cirrus • Cirrostratus • Cirrocumulus
Middle Clouds - Alto	2,000 to 5,500 metres	• Altostratus • Altocumulus
Low Clouds - Stratus	Up to 2,000 metres	• Stratus • Stratocumulus • Nimbostratus

Clouds with Vertical Growth • Cumulus • Cumulonimbus

Special Clouds • Mammatus • Lenticular • Fog • Contrails



Cirrus clouds

The most common of the high clouds. They are made of ice and when they are blown by the wind it gives them a thin, wispy appearance. They are sometimes called 'Mares' tails'.

Cirrostratus clouds

A thin layer of high clouds that can cover the entire sky. They are so thin that the sun and moon can be seen through them.

Cirrocumulus clouds

Are small, rounded white puffs that appear in long rows. When you see these it is sometimes called a 'Mackerel sky'.

Altostratus clouds

Are grey mid level clouds composed of ice crystals and water droplets. These clouds usually cover the entire sky.

Altocumulus clouds

Are mid level clouds that are made of water droplets and appear as grey puffy masses. They usually form in groups.

Stratus clouds

Are uniform greyish clouds that often cover the entire sky. They look like fog that doesn't reach the ground.

Stratocumulus clouds

Are low, puffy and grey. Most form in rows with blue sky visible between them.

Nimbostratus clouds

Are a dark grey, wet looking cloudy layer associated with continuously falling rain or snow.

Cumulus clouds

Are white, puffy clouds with a flat bottom and rounded tops. They are often called 'Fair weather clouds'. When the top of the Cumulus clouds look like the head of a cauliflower, it is called 'Cumulus Congestus' or 'Towering Cumulus'.

Cumulonimbus clouds

Are giant, towering Cumulus clouds and are often known as 'Thunderstorm clouds'.

Mammatus clouds

Are low hanging bulges that droop from Cumulonimbus clouds.

Lenticular clouds

Look like discs and are caused by a wave wind pattern around mountains.

Fog

Is cloud at ground level.

Contrails

Are the condensation trails left behind by jet aeroplanes.